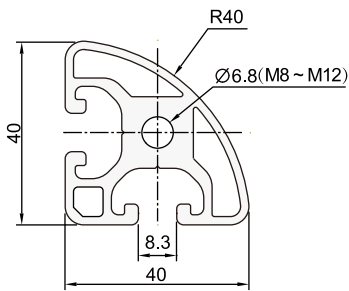
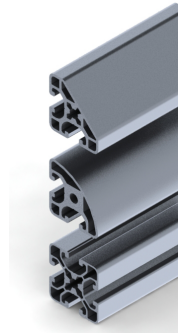


BX01-005 欧标P8铝型材 40系列

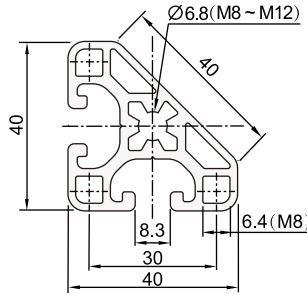
欧标P8/40系列工业铝型材

材料: A6063-T5铝合金,
表面阳极氧化;

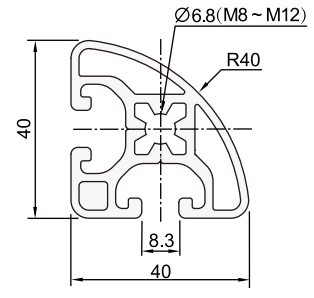
1. 槽宽8.3mm欧标铝型材, 通用型材系列, 承载能力好, 适用于普遍设备的结构中;
2. 花洞中心孔更容易攻牙.
3. 传统圆洞中心孔, 连接更牢固;
4. 常用重量和尺寸, 多种型号和种类可选, 经典结构, 易于和配件连接.



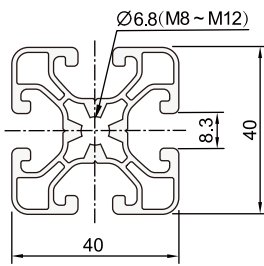
a



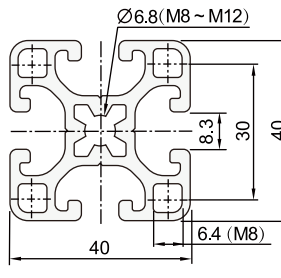
b



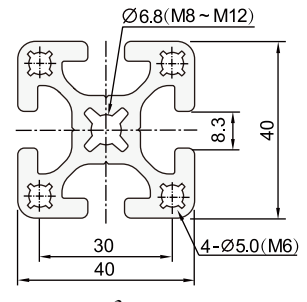
c



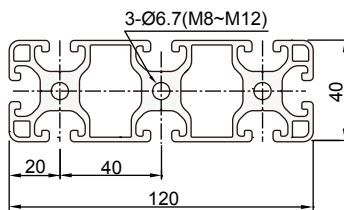
d



e



f



g

槽型	规格	长度/M	重量/KG/M	定货号
a	P8 P8 40xR40x90° S L	6.0 Max.	1.463	011.8008.03-L
b	P8 P8 40x40x45° L	6.0 Max.	1.363	011.8017.03-L
c	P8 P8 40xR40x90° L	6.0 Max.	1.336	011.8018.03-L
d	P8 P8 40x40 XL	6.0 Max.	1.299	011.8014.02-L
e	P8 P8 40x40 L	6.0 Max.	1.618	011.8015.03-L
f	P8 P8 40x40 M	6.0 Max.	2.000	011.8016.04-L
g	P8 P8 120x40S L	6.0 Max.	4.350	011.8009.03-L